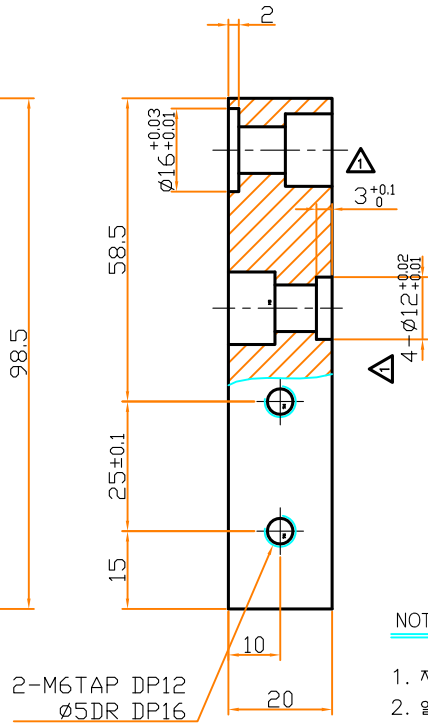
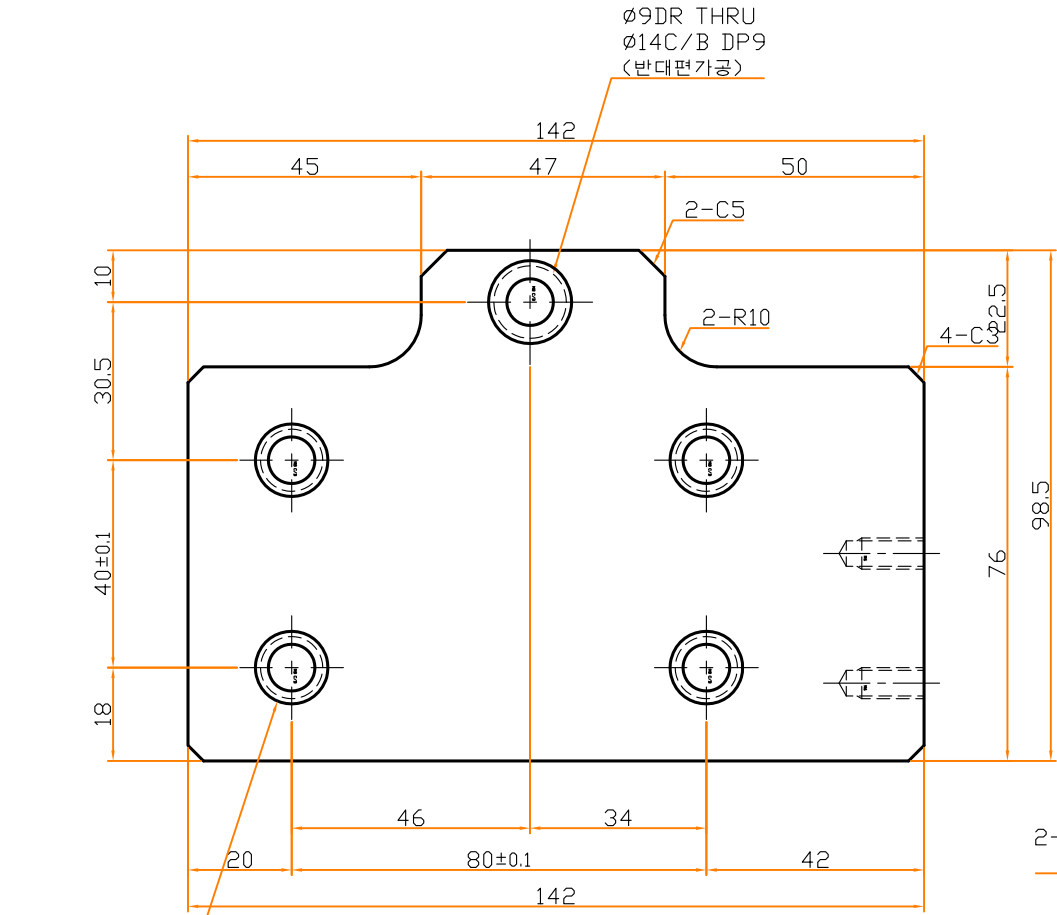




NO.	REVISION	DATE	DR	REMARK
△	4-Ø12 홀 추가	14/03.10		
△	구조 변경	14.04.07	이영길	



**NOTE**

1. 지시없는 모서리부 C0.5.
2. 일반 가공 공차 ±0.1
3. 백색 아연 도금 할 것.

4-Ø9DR THRU  
Ø14C/B DP9

Ø9DR THRU  
Ø14C/B DP9  
(반대편가공)

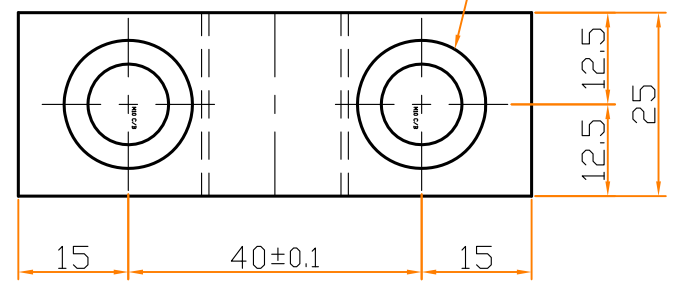
2-M6TAP DP12  
Ø5DR DP16

03	PLATE	SS41	1	-
NO.	DESCRIPTION	MATERIAL & SPEC	Q'TY	REMARK
DWG. NAME				
DRAWN		USER		
CHECKED		PROJECT		
APPROVED		MODEL NO	SCALE	1/1
		OPER NO	DATE	2014.04.07
TOOL NO			SHEETS	SHEET NO
			A3	

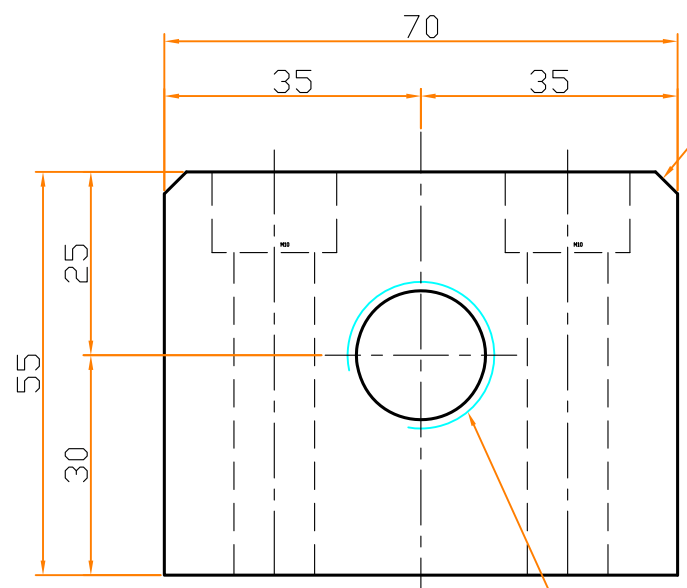
NO.	REVISION	DATE	DR	REMARK



2- $\phi$ 11DR THRU  
 $\phi$ 17.5C/B DP11



2-C3



M20xP1.5 TAP THRU

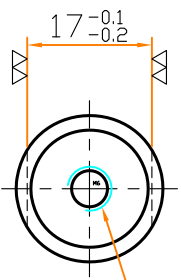
NOTE

1. 지시없는 모서리부 C0.5.
2. 일반 가공 공차  $\pm 0.1$
3. 백색 아연 도금 할 것.

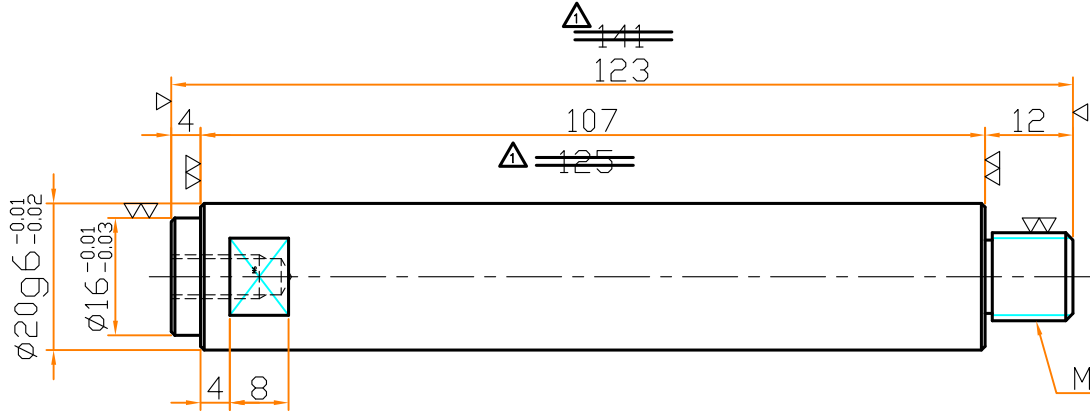
07	HOLDER	SS41	1	-
NO.	DESCRIPTION	MATERIAL & SPEC	Q'TY	REMARK
DWG. NAME				
DRAWN		USER		
CHECKED		PROJECT		
APPROVED		MODEL NO	SCALE	1/1
		OPER NO	DATE	2014.02.28
TOOL NO			SHEETS	SHEET NO
			A4	

NO.	REVISION	DATE	DR	REMARK
△	길이 축소	14/03.10		

G (▽ ▽ ▽)



M6TAP DP12  
 Ø5DR DP16

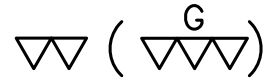


M12 SCREW

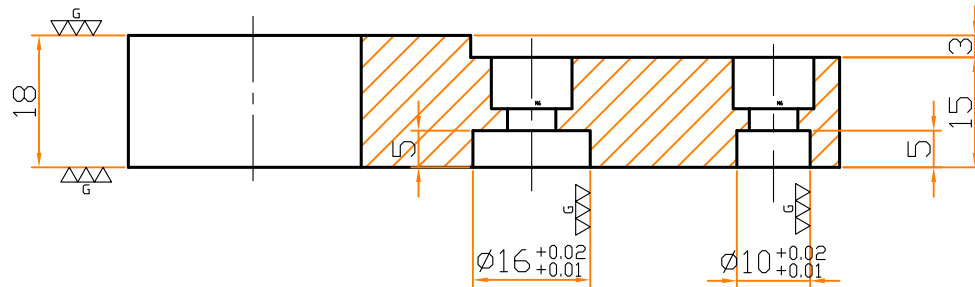
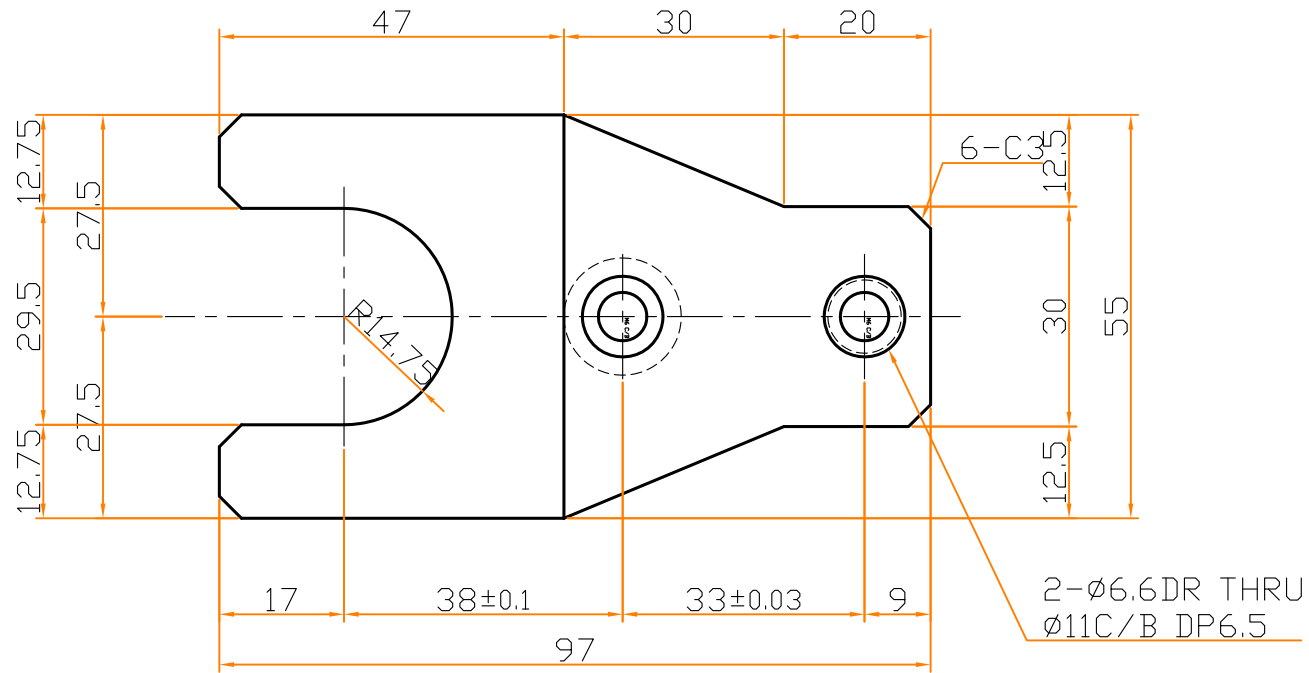
NOTE

1. 지시없는 모서리부 C0.5.
2. 일반 가공 공차 ±0.1
3. 열처리 연마봉 구매후 추가 가공 할것.
4. 경질 크롬 도금 할것.

13	GUIDE SHAFT	SU12	1	-
NO.	DESCRIPTION	MATERIAL & SPEC	Q'TY	REMARK
DWG. NAME				
DRAWN		USER		
CHECKED		PROJECT		
APPROVED		MODEL NO	SCALE	1/1
		OPER NO	DATE	2014.02.28
TOOL NO			SHEETS	SHEET NO
			A4	



NO.	REVISION	DATE	DR	REMARK

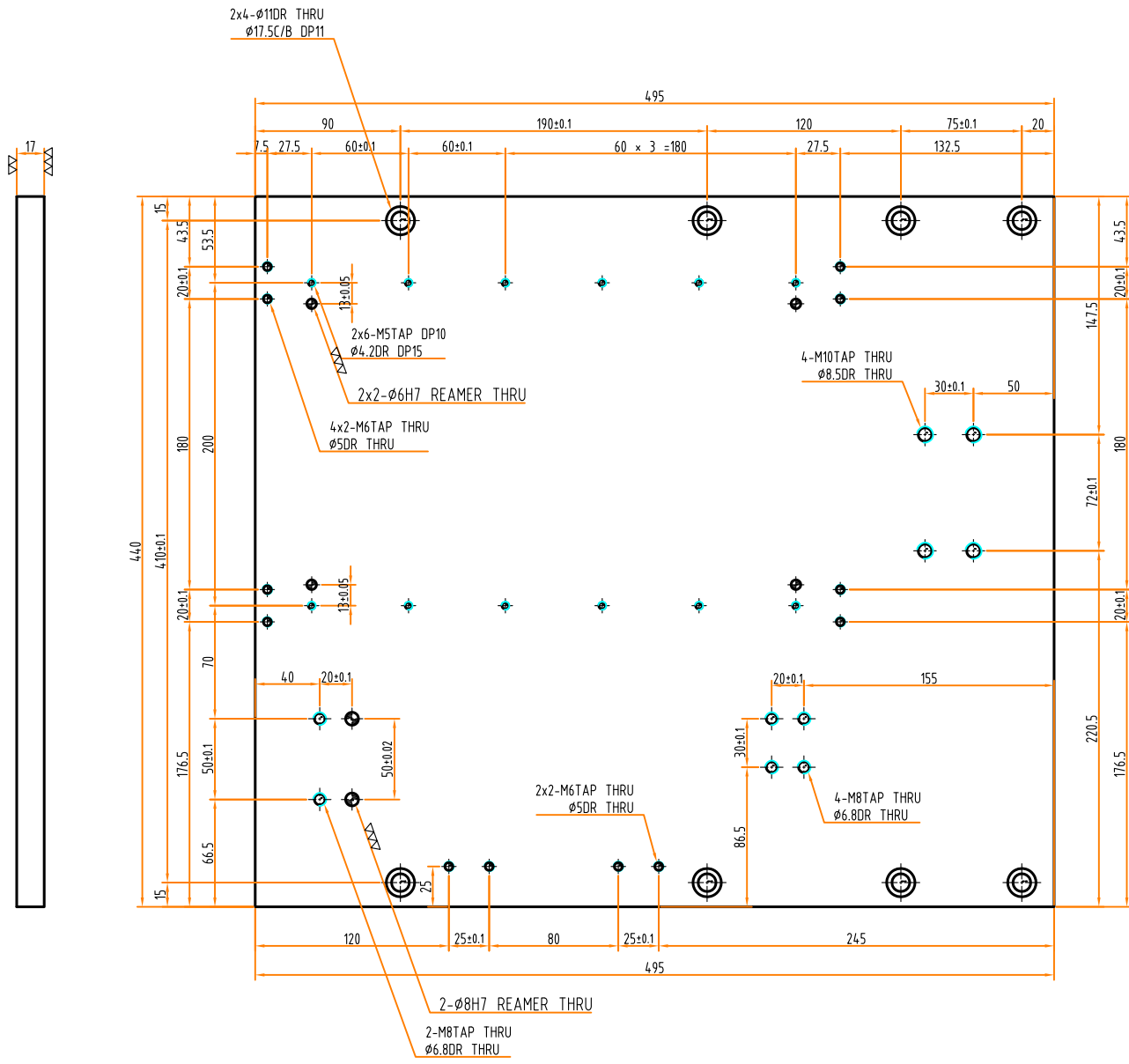


NOTE

1. 지시없는 모서리부 C0.5.
2. 일반 가공 공차 ±0.1
3. 전체 열처리 할것. (HRC38~42)
4. 경질 크롬 도금 할것.

14	PUSH PLATE	SCM440	1	-
NO.	DESCRIPTION	MATERIAL & SPEC	Q'TY	REMARK
DWG. NAME				
DRAWN		USER		
CHECKED		PROJECT		
APPROVED		MODEL NO	SCALE	1/1
		OPER NO	DATE	2014.02.28
TOOL NO			SHEETS	SHEET NO
			A4	

NO.	REVISION	DATE	DR	REMARK



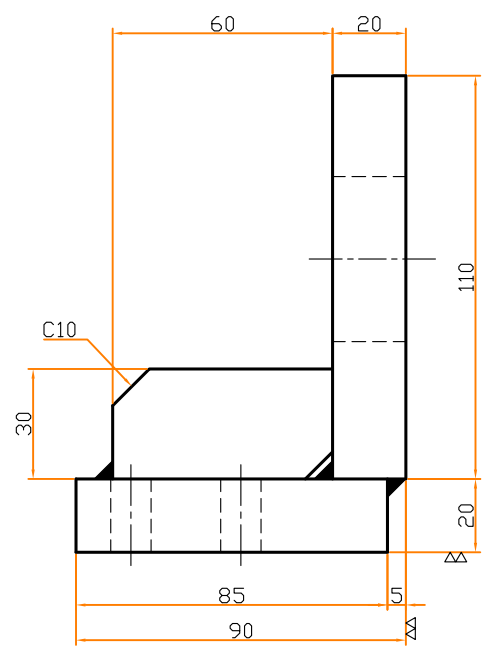
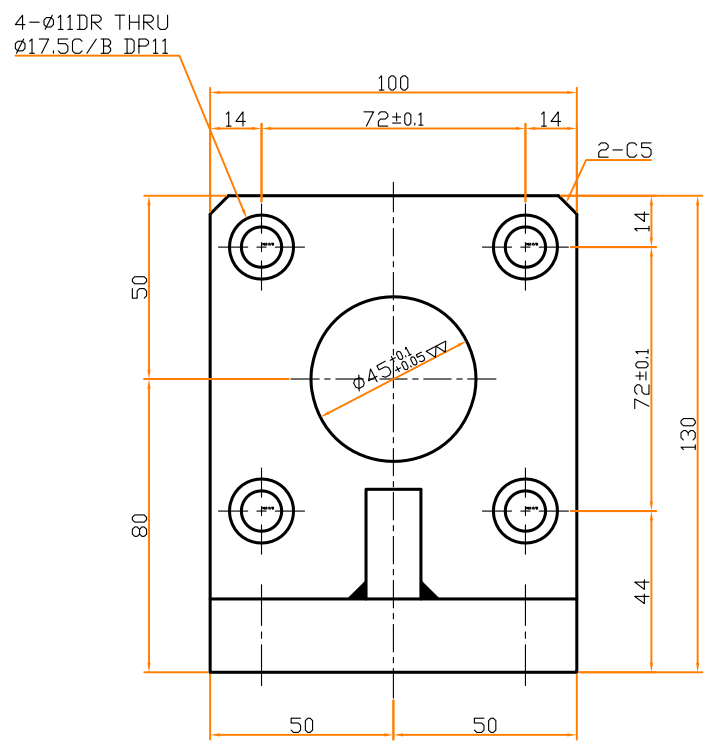
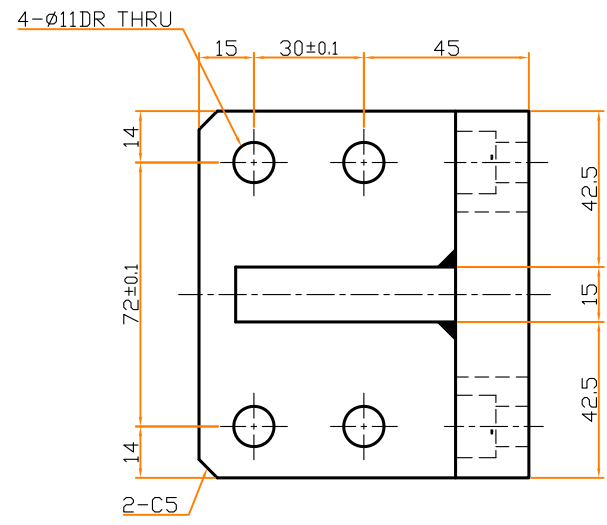
NOTE

1. 지시없는 모서리부 C0.5.
2. 일반 가공 공차  $\pm 0.1$
3. 백색 아연 도금 할 것.

25	PLATE	SS41	1	-
NO.	DESCRIPTION	MATERIAL & SPEC	Q'TY	REMARK
DWG. NAME				
DRAWN		USER		
CHECKED		PROJECT		
APPROVED		MODEL NO	SCALE	1/2
		OPER NO	DATE	2014.02.28
TOOL NO			SHEETS	SHEET NO
			A2	

NO.	REVISION	DATE	DR	REMARK

▽ (▽▽)



NOTE

- 레이저 절단및 절곡 할것.
- 날카로운 모서리 제거 할것.
- 지시없는 모서리부 C0.5.
- 일반 가공 공차 ±0.1
- 백색 아연 도금 할 것.

08	BRACKET	SS41	1	-
NO.	DESCRIPTION	MATERIAL & SPEC	Q'TY	REMARK
DWG. NAME				
DRAWN		USER		
CHECKED		PROJECT		
APPROVED		MODEL NO	SCALE	1/1
		OPER NO	DATE	2014.02.28
TOOL NO			SHEETS	SHEET NO
			A2	

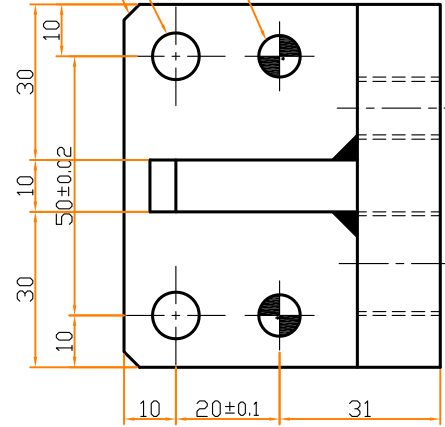
NO.	REVISION	DATE	DR	REMARK
△				



2- $\phi$ 8H7 REAMER THRU

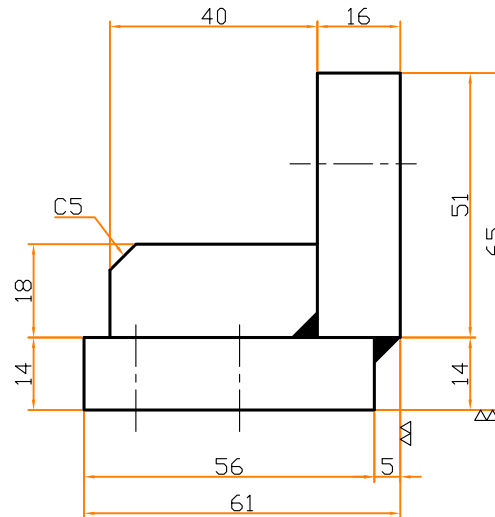
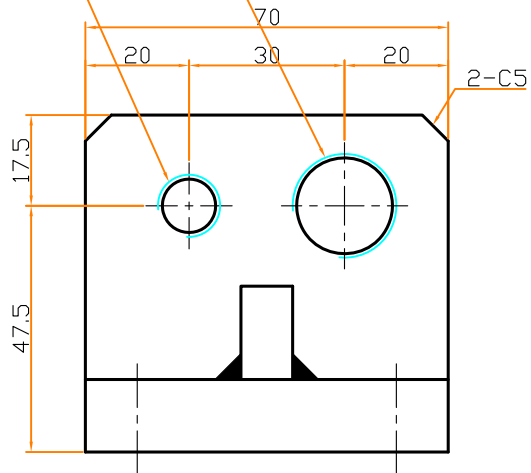
2- $\phi$ 9DR THRU

R-C3



M20xP1.5 TAP THRU

M12TAP THRU  
 $\phi$ 10.3DR THRU



NOTE

1. 지시없는 모서리부 C0.5.
2. 일반 가공 공차  $\pm 0.1$
3. 이음부 접합은 용접 할것.
4. 모든 용접 부위는 견고히 시행 할것.
5. 백색 아연 도금 할 것.

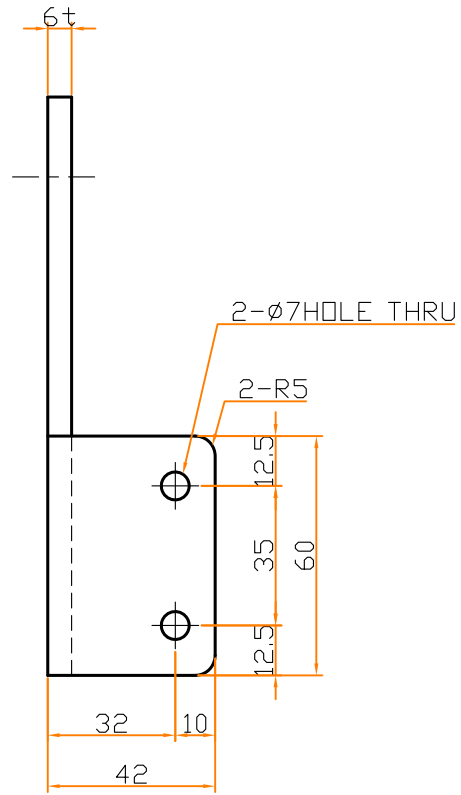
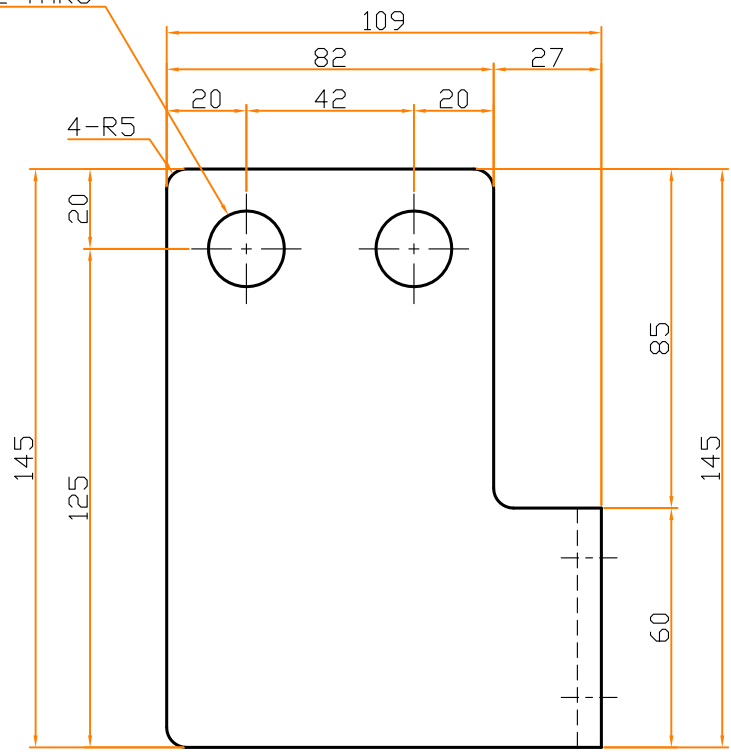
17	BRACKET	SS41	1	-
NO.	DESCRIPTION	MATERIAL & SPEC	Q'TY	REMARK
DWG. NAME				
DRAWN		USER		
CHECKED		PROJECT		
APPROVED		MODEL NO	SCALE	1/1
		OPER NO	DATE	2014.02.28
TOOL NO			SHEETS	SHEET NO
			A3	

NO.	REVISION	DATE	DR	REMARK
△				

~



2-Ø19HOLE THRU



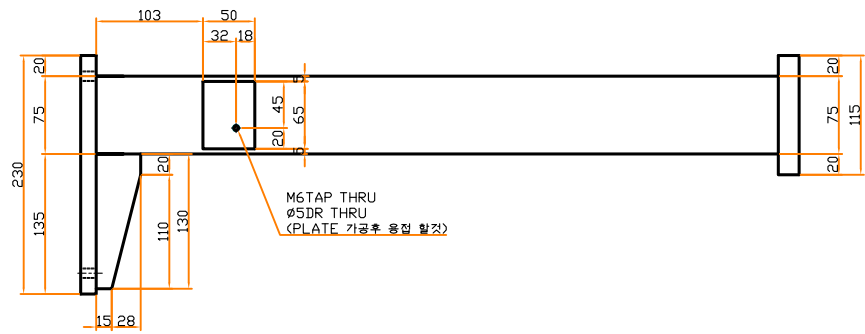
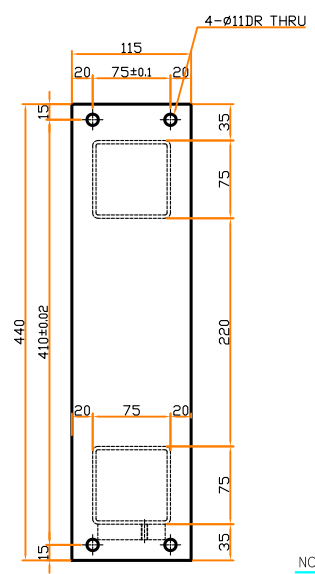
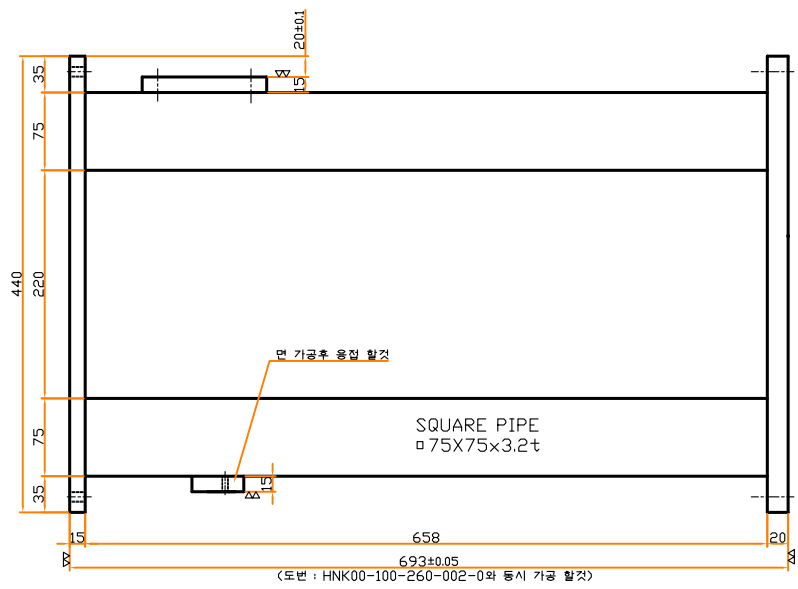
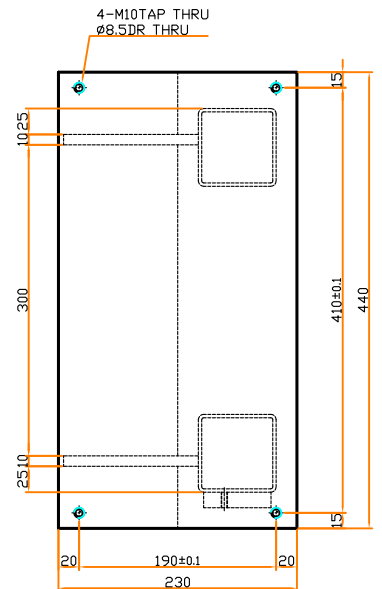
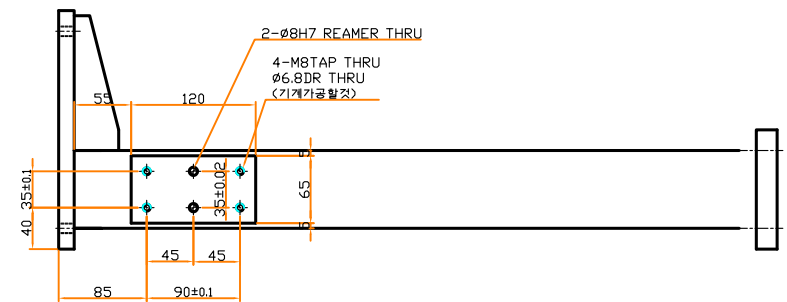
NOTE

- 레이저 절단 및 절곡 할 것.
- 날카로운 모서리 제거 할 것.
- 백색 아연 도금 할 것.

05	SENSOR PLATE	SS41	1	-
NO.	DESCRIPTION	MATERIAL & SPEC	Q'TY	REMARK
DWG. NAME				
DRAWN		USER		
CHECKED		PROJECT		
APPROVED		MODEL NO	SCALE <b>1/1.3</b>	
		OPER NO	DATE <b>2014.02.28</b>	
TOOL NO			SHEETS	SHEET NO
			A3	

NO.	REVISION	DATE	DR	REMARK
△				

~ (▽ ▽ ▹ ▹ ▹)



- NOTE
1. 지시없는 모서리부 C0.5.
  2. 일반 가공 공차 ±0.1
  3. 이음부 접합은 용접 할것.
  4. 모든 용접 부위는 견고히 시행 할것.
  5. 지정색 도장 할것.

01	SUPPORT	SS41	1	-
NO.	DESCRIPTION	MATERIAL & SPEC	Q'TY	REMARK
DWG. NAME				
DRAWN		USER		
CHECKED		PROJECT		
APPROVED		MODEL NO	SCALE <b>1/2.5</b>	
		OPER NO	DATE <b>2014.02.28</b>	
TOOL NO			SHEETS	SHEET NO
			A1	